



Duplex Strainer



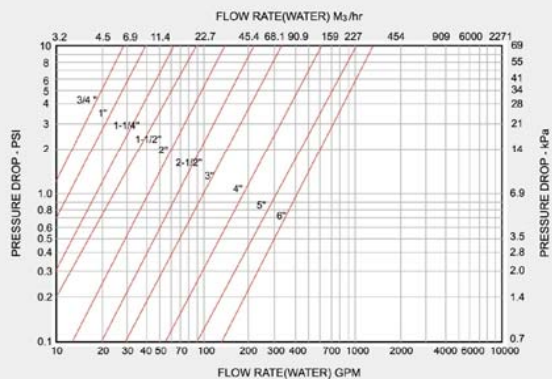
球塞式雙桶過濾器

Features:

- ▶ Fast disassemble design, Cleaning filter for short time.
- ▶ No Shutdown for basket cleaning
- ▶ Ball valve design for Zero leaking
- ▶ Design of steering precision positioning
- ▶ Ball Sealing system for long life
- ▶ Can set Pressure drop indicator with electronic signal

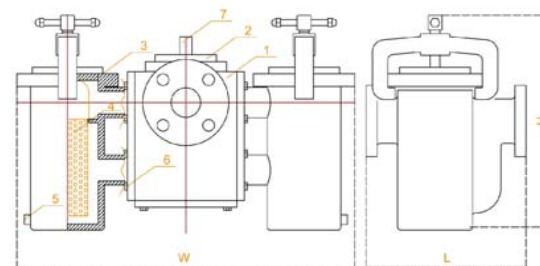
- ▶ 快拆式設計，輕鬆快速清理過濾網
- ▶ 不需中斷管路，進行清洗過濾網
- ▶ 球塞式設計，完全0洩漏
- ▶ 精準的轉向定位設計
- ▶ 球塞座墊可更換，使用壽命長
- ▶ 可加裝壓差顯示器及電子訊號

Curve of Pressure drop & Flowrate



流阻力係數 Cv Factors

	IN	3/4"	1"	1 1/4"	1 1/2"	2"	2 1/2"	3"	4"	6"
Size	mm	20	25	30	40	50	65	80	100	150
Value		9	12.6	19	28.4	42.4	67	106	190	420



TEST PRESSURE:
API 598 Shell Test
(water)

材質表 MATERIAL

No	Part Name	Material			
		Cast iron	Cast steel	Stainless Steel	
1	BODY	A126	A216-WCB	A351-CF8	A351-CF8M
2	COVER	A126	A216-WCB	A351-CF8	A351-CF8M
3	GASKET	NBR / VITON			
4	SCREEN	SUS304	SUS304	SUS304	SUS316
5	PLUG	FCMB	A216-WCB	SUS304	SUS316
6	BOLT/NUT	ASTM GR A307			
7	STEM	SUS304	SUS304	SUS304	SUS316

尺寸表 DIMENSIONS

UNIT : mm

Size	IN	3/4"	1"	1-1/2"	2"	2-1/2"	3"	4"	6"
	mm	20	25	40	50	65	80	100	150
L		220	220	255	280	355	355	440	600
W		490	490	550	640	720	720	880	1000
H		300	300	380	500	550	550	550	680
Weight (kg)		50	50	58.5	108.5	150	150	262	499

所有法蘭規格皆可 All Flange Standard are Available
所有連接方式皆可 All Connection are available